

How to install a Hard Drive in a JAD DVR in 10 Steps

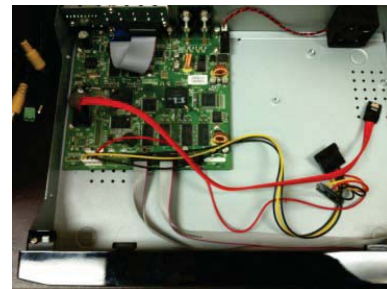
1. After opening the box, you should have:

- The DVR
- The plastic bag containing:
 - The bracket for mounting the Hard Drive
 - 4 Screws with washers to attached the bracket to the DVR studs.
 - 4 Screws without washers to attached the bracket to the DVR
 - 4 remaining screws to secure the DVR cover (left and right), see step 6

2. Remove the DVR cover: there is only one screw at the back of the DVR, the others are inside the plastic bag (see step 1 and Picture 2)



Picture 1

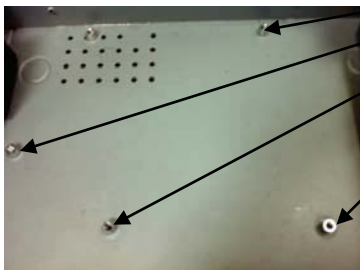


Picture 2

3. The 2 brackets must be attached to the DVR with the 4 screws supplied (the one with no washer) (refer to picture 1). There is no left or right; either ways will work.

- (The top of the brackets (holes) could be used later for a second Hard drive in the same DVR)
Tip: For Analog **DVR** (4, 8 and 16), **PRO** or any **HD DVR's**, make sure you check with [«jadsupport.com»](http://jadsupport.com) for the proper type of Hard Drive to used.

4. Secure the HD (brackets) on the mounting studs (4) with the four screws with washer.



Picture-3



Picture 4



Picture 5

Notes: Before installing the Hard Drive on the studs:

- Make sure all the cables are not caught under it.
- All the cables are properly insert into their respective connectors
- Make sure that the RED cable from the Hard Drive is connected to the **SATA 1 (HDD1)** (**HDD2** will be used for the second Hard Drive): the cable is not always provided

5. Connect the 2 cable to the Hard Drive (Power – multi wires and SATA – Red cable)

[picture 6]



6. Close the DVR cover, 2 on each side (included in the plastic bag)

7. Formatting the Hard Drive.

- First thing to do is to check the firmware (now 1.1.0.9) Download from jadsupport.com
 - Apply the power to the DVR (Make sure you have the North American AC cord)
 - Connect the mouse to the appropriate port*
 - * On an analog DVR (4, 8 and 16), use the left port for the mouse
 - For the PRO and any HD DVR, any port could be used.
 - «Right click» anywhere on the screen and click on «SETUP»
 - You will be prompt to enter the ID (**admin**) and Password (no PW – leave empty)
- Then go to «system» and firmware (Screen Shot 3)
- To change the time and date (see step 8)

8. Setting the time and date (Screen shot 1)

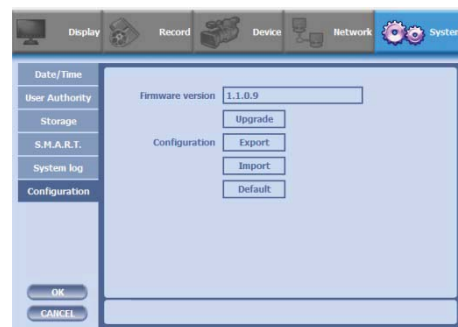
- Once in the «System» menu, set the time and date. Choose the proper «Time zone» for your area.



Screen Shot 1



Screen Shot 2



Screen Shot 3

- Then click on «Storage» and «Format» (Screen Shot 2)
- Once the format is completed, click on «HDD Check» [RUN]

9. Modified the language (if required) before completion (in the «display» menu)

10. Make sure ALL the video inputs are working properly by connecting a camera on each input before releasing the DVR to the customer

For more information or Technical Support, please call: 1.800.791.1919

from 8:00am till 8pm, Monday to Friday

www.jadsupport.com